



Monument Conservation

Information for Agencies

Developed by the CLSA Monument Conservation Committee
2014



“Land is one of California’s most precious assets, the ownership of land, and consequently the ability to define boundaries is dependent of monuments and their perpetuation.”

2 DEC 1985 letter from Board of Registration for Professional Engineers and Land Surveyors (BORPELS) to all County Surveyors and City Engineers



Why Monuments are Important

Monuments are used to maintain the integrity and continuity of adjoining properties, neighborhoods, roads, subdivisions, highways, cities, counties, states, and even countries.

Benefits of Monument Conservation

Compliance with the law

Protection of the public

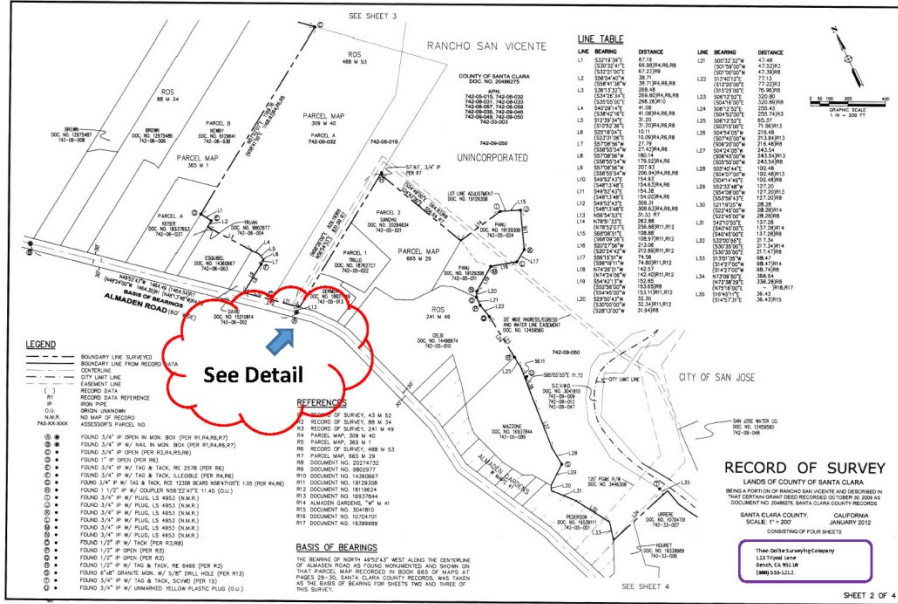
Preserve cadastral network

Avoid liability

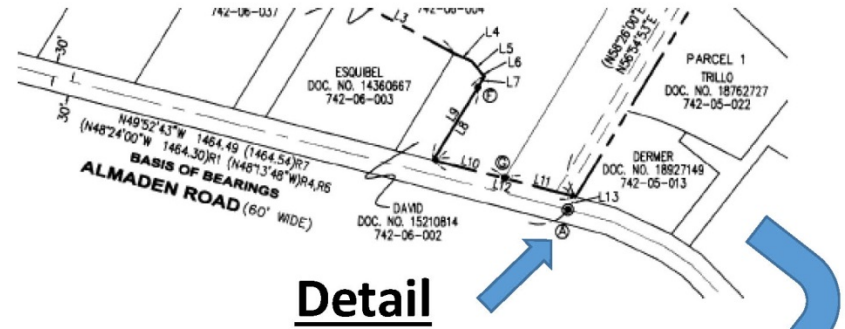
Cost savings



How the Monument Came to Be



Example



Detail



A brass tag with an LS number, RCE number or agency name typically is attached to the iron pipe. This identifies who set it.



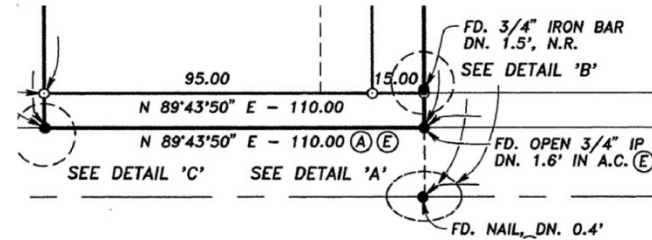
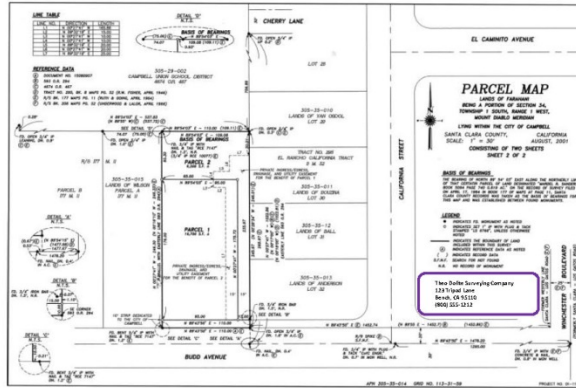
Inside the monument well there is a 3/4 inch iron pipe with a brass tag.



This is a monument well sometimes call a monument box. The 4 small circles are nails used to install the monument well.

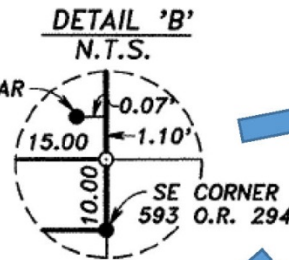


How the Monument Came to Be



Example

Detail



Surveyors often "flag" the corners when performing a field survey.



A brass tag with an LS number, RCE number or agency name typically is attached to the iron pipe.



As stated on the map in the legend:

⊙ INDICATES SET 3/4" IRON PIPE WITH BRASS TAG LS 7204

Monument Destruction

There has been an increase in the mortality rate of survey monuments set for right of way control, public and private property boundaries. With their destruction, the potential for conflicts and uncertainty of boundaries arises.

Causes of Monument Destruction

Jurisdictions Upgrading Infrastructure
Private Land Development

Effects of Monument Destruction

Increases Cost to the Public
Compromises Integrity of Boundaries

Effects of Monument Destruction

- ✓ Loss of bench marks can result in higher cost to obtain elevation certificates
- ✓ Loss of monuments can result in the inability to enforce setback requirements (CBC – 107.2.5)
- ✓ Loss of monuments disrupts harmony between neighbors which affect permitting and approval processes for agencies.
- ✓ Monuments, not fences, identify property lines.
- ✓ Recovery of destroyed monuments creates safety issues within the right-of-way
- ✓ Slows development which has negative impact on economy



The Law

8771. (In pertinent part)

(d) The governmental agency performing or permitting construction or maintenance work is responsible for ensuring that either the governmental agency or landowner performing the construction or maintenance work provides for monument perpetuation required by this section.

(Amended by Stats. 2014, Ch. 400, Sec. 16. Effective January 1, 2015.)



The Law (Continued)

6730.2.

(a) It is the intent of the Legislature that the licensure requirements that are imposed upon private sector professional engineers and engineering partnerships, firms, or corporations shall be imposed upon the state and any city, county, or city and county that shall adhere to those requirements. Therefore, for the purposes of Section 6730 and this chapter, at least one licensed engineer shall be designated the person in responsible charge of professional engineering work for each branch of professional engineering practiced in any department or agency of the state, city, county, or city and county.

(b) Any department or agency of the state or any city, county, or city and county that has an unlicensed person in responsible charge of engineering work on January 1, 1985, shall be exempt from this requirement until that time as the person currently in responsible charge is replaced.

(c) The designated person in responsible charge of professional civil engineering work of any department or agency of the state, city, county, city and county, district, or special district pursuant to this section is responsible for compliance with subdivisions (b) and (c) of Section 8771. (Amended by Stats. 2014, Ch. 400, Sec. 9. Effective January 1, 2015.)

Avoid Monument Destruction

Ensure internal process/procedures are set to conserve monuments

Include monument perpetuation in contracts

Require monuments be shown on plans

Educate/train inspectors & engineers

Prepare thorough corner records & ROS maps

Educate contractors regarding their responsibilities

What Can an Agency Do?

- ✓ Increase awareness to survey field crews
- ✓ Provide training to inspectors
- ✓ Develop a Monument Conservation guide for Contractors and inspectors
- ✓ Be Proactive! Send letters to contractors & utility companies in advance of projects outlining their responsibility to perpetuate monuments
- ✓ Hold contractors responsible for destroying monuments during project
- ✓ Letters to property owners via Code Enforcement Dept.
- ✓ Ensure Monument Conservation throughout design, permit process, and building of public or private projects

Laws, Standards, & Opinions

CONSTRUCTION/DEVELOPMENT STANDARDS

Green Book

Brown Book

CalTrans Standard

City/County Standards

STATE LAWS

Business & Professions Code
§8771 and §8725

Penal Code §605

Streets & Highways Code §732

Government Code §27581

OPINIONS

1985 BORPELS Letter

2004 BPELS Letter

2000 BPELS Bulletin

2011 BPELSG Letter



Monument Conservation

"Land is one of California's most precious assets, the ownership of land, and consequently the ability to define boundaries is dependent of monuments and their perpetuation."

2 DEC 1985 letter from Board to all County Surveyors and City Engineers

Survey Monument are Protected by the Law

The law protects monuments which are critical to the protection of private property rights and public infrastructure of California. Below are relevant sections of law pertaining to survey monuments. Click the links below to review the laws or visit: leginfo.legislature.ca.gov

[Business & Professions Code §8771](#)

[Streets & Highways §732 & §732.5, §1492.5, §1810.5](#)

[Penal Code §605](#)

[1985 BPELSG Opinion](#)

[2011 BPELSG Opinion](#)

Resources for Public Agencies

Business and Professions Code §8771 requires public agencies to enforce the perpetuation of monuments on construction projects within their jurisdiction.

[Sample Contract Language](#)

[Sample Educational Letter \(CEAC\)](#)

[Sample Monument Preservation Guideline \(San Bernardino\)](#)

[Sample Condition for Tentative Maps](#)

[Monument Conservation Brochure](#)

[Sample Handout for Inspectors & Contractors \(City of San Diego\)](#)

[Sample Agency Procedure \(San Diego\)](#)

[Sample In-House Training PowerPoint](#)

[BPELSG Webinar - Stop Monument Destruction Before it is too Late!](#)

[Sample handout for Contractors \(City of Anaheim\)](#)

For More Information

For more information or assistance regarding monument conservation, please contact CLSA Monument Conservation Chair, [Ron Nelms](#)

The Board for Professional Engineers, Land Surveyors and Geologists (BPELSG) has designated Enforcement Analyst [Larry Kereszt](#) as the contact person for any Monument Conservation issues. Larry can be contacted at (916) 263-2240 or Larry.Kereszt@dca.ca.gov



californiasurveyors.org/moncon-agency.html

Resources

<http://www.californiasurveyors.org/moncon-agency.html>

Sample Letter (CEAC)	Sample Monument Preservation Guideline (San Bernardino)
Brochure	Sample Handout for Inspectors and Contractors (San Diego)
Sample Agency Procedure (San Diego)	Sample in-house Training PowerPoint
BPELSG Webinar	Sample Handout for Contractors (City of Anaheim)

Questions?

Your Name

If you would like to provide it, insert your contact information.

CLSA

Phone: (707) 578-6016 Email: clsa@californiasurveyors.org

BPELSG

The Board for Professional Engineers, Land Surveyors and Geologists (BPELSG) has designated staff for any Monument Conservation issues. Please contact BPELSG at:
BPELS.Enforcement_information@dca.ca.gov